

Detailed Instructions for Installing EQiS Data Processor (EDP) and the Honeywell EDD Format Files
Honeywell has implemented an EQiS database for our management of environmental data. The following website has the HONEYWELL EQEDD format files, Instructions, and EQiS Data Processor (EDP) software application to download and use for checking EDD packages prior to sending to Honeywell.

Honeywell EDD Format Website: <https://earthsoft.com/products/edp/edp-format-for-honeywell/>

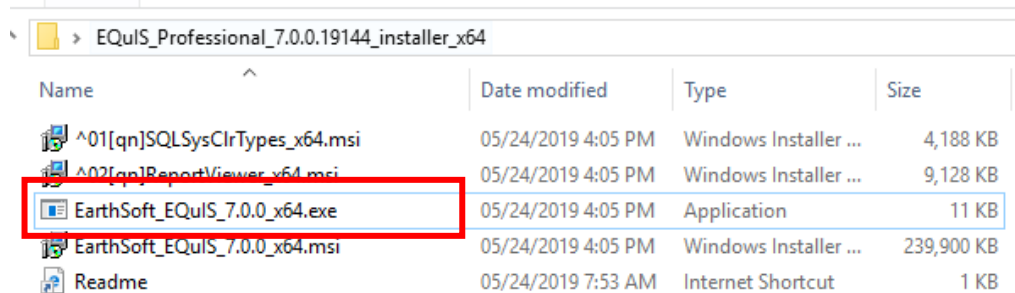
- 1) Download the appropriate version of EDP from the Honeywell EQEDD Download Page:



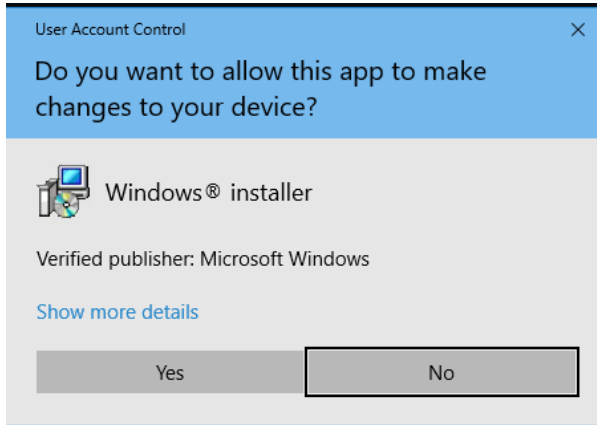
Honeywell

Name	Size	Type	Modified
EQiS Data Processor (EDP) v7 x86 (32bit) x64 (64bit) xCopy	50.1-50.3 MB	.zip	2019/02/15
Honeywell Format File Only	798 KB	.zip	2019/06/13
Honeywell Reference Values	2830 KB	.zip	2019/06/14
Honeywell EDD Description	44 KB	.xlsx	2019/06/14
Honeywell Blank EDD	36 KB	.xlsx	2019/06/14

- 2) **Note:** Most users have a 64 bit install of windows 10. The file ending in x64 is commonly used.
- 3) After downloading the zip file, right click it and choose Properties to make sure it is not blocked.
- 4) Right click the file and extract the files contents.



- 5) In the folder double click on the EarthSoft_EarthSoft_EDP_Standalone_7.0.0_x64.exe to run the EDP Standalone 64-bit installer. - **Note: You may need Administrative Permissions to complete this install.**



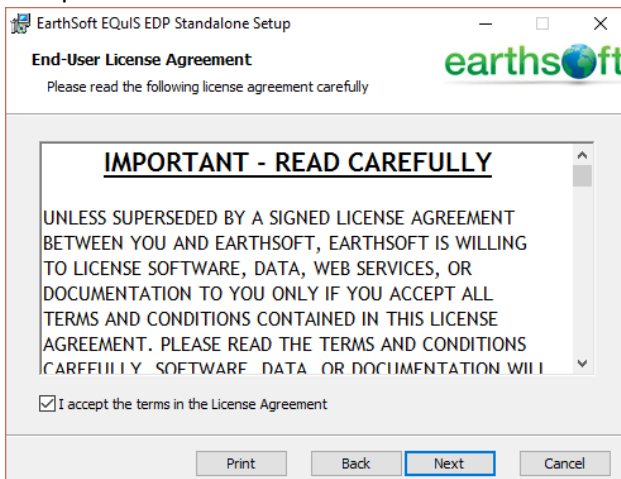
Click "Yes" if presented with this screen.

- 6) The EarthSoft EQiS EDP Standalone Setup Wizard will launch.



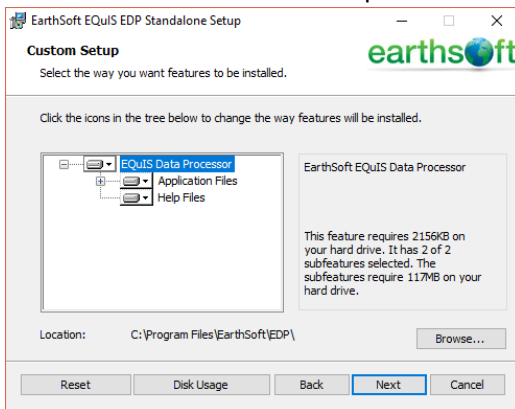
Click "Next" to begin the install

- 7) Accept the EarthSoft EQiS EDP Standalone License Agreement after a careful review.

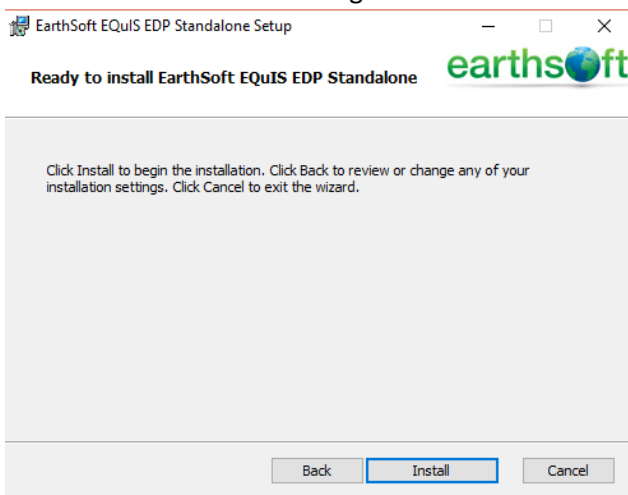


Then click "Next"

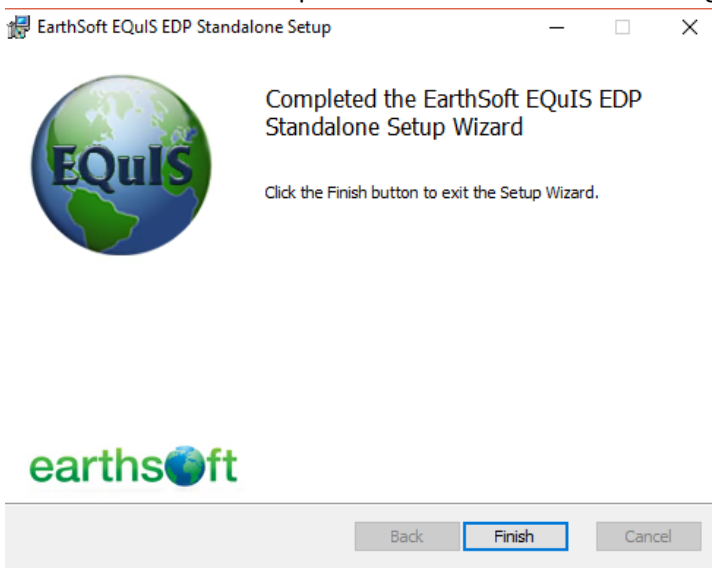
- 8) Click Next on the Custom Setup Screen to accept the default configuration.



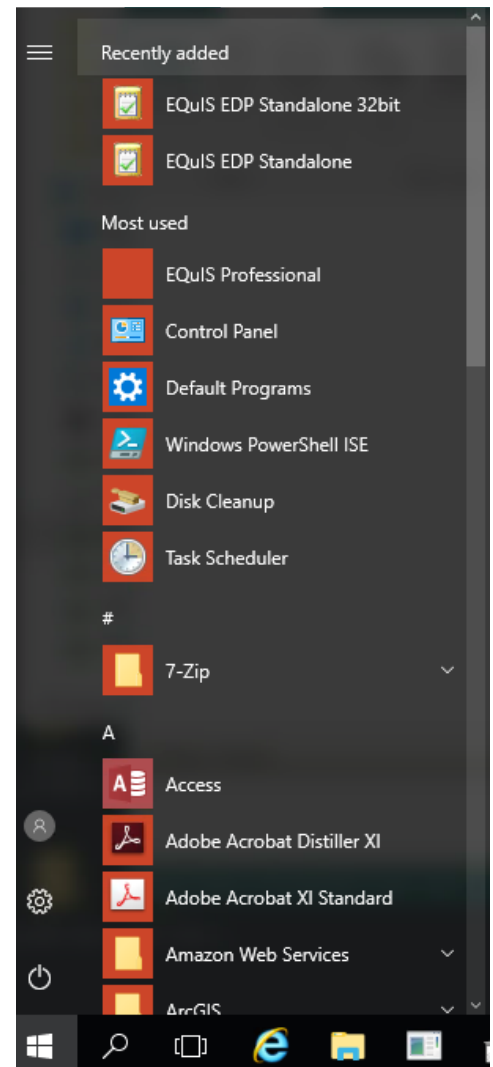
- 9) Click "Install" on the following screen.



- 10) Once the installer is complete click "Finish" on the following screen.



Note: EQUiS Data Processor Standalone will install in the C:\Program Files\EarthSoft\EDP folder and should add an EarthSoft folder in the Windows Start Menu. Launch EDP by clicking the Windows Start button and typing EDP. It is recommended to pin a short cut to the taskbar and start menu for easy access to EQUiS EDP Standalone.



Run EQUiS Data Processor (EDP) Standalone from XCOPY Folder

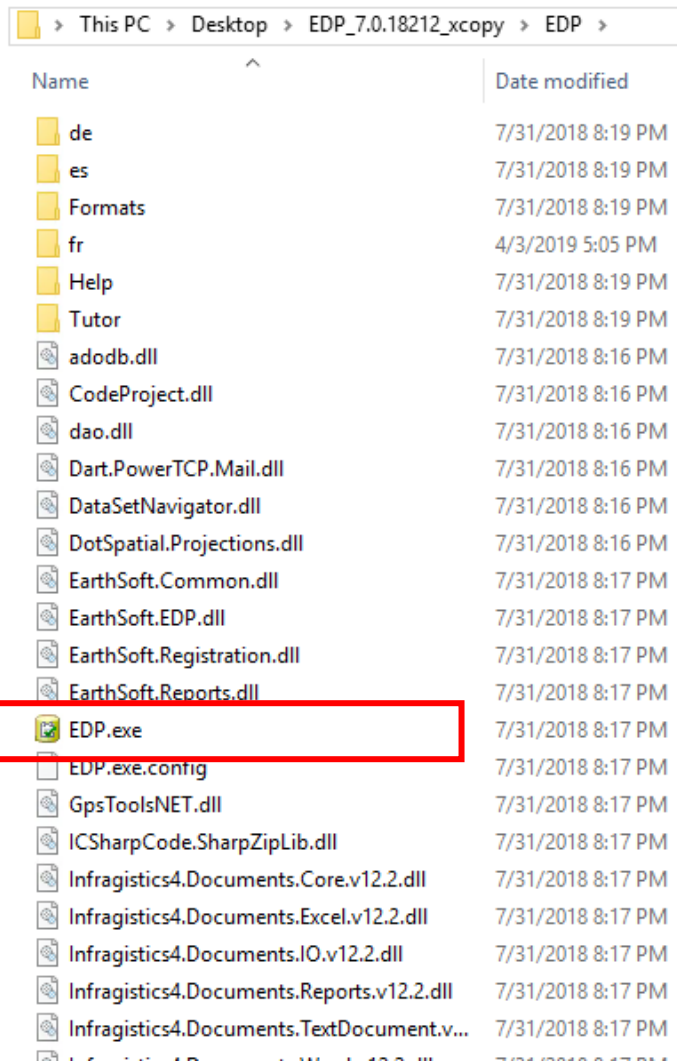
Running EDP Standalone from an XCOPY folder allows users to maintain pre-installed older versions of EQUiS on their systems without needing to upgrade to the latest EQUiS 7 Build. The steps to use the XCOPY folder version of EDP Standalone are as follows:

- 1) Download the EDP_7.0.19046_xcopy.zip file by clicking on the “xcopy” link on the Honeywell EQUiS EDD format download page.

EQUiS Data Processor (EDP) v7	50.1-50.3 MB	.zip	2019/02/15
x86 (32bit) x64 (64bit) xCopy			

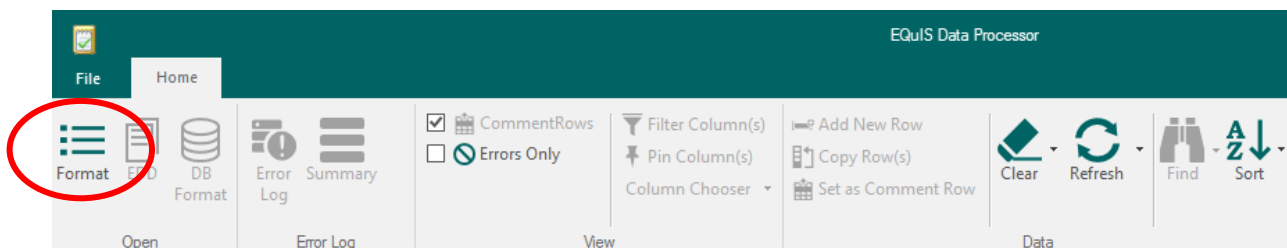
- 2) Right click the downloaded EDP xcopy.zip file and select properties to make sure it isn't blocked.
- 3) Right click and select extract the files and contents to your My Documents or Desktop folder locations.

- 4) Browse into the EDP_7.0.19046_xcopy folder and EDP folder inside and double click on EDP.exe to launch EDP Standalone.



Instructions on Using the HONEYWELL EQEDD Format in EDP Standalone

- 5) Once EDP Standalone opens click "Format" to open the HONEYWELL.zip EDD format



- 6) Select the HONEYWELL.zip EDD format from the location you previously downloaded it from.

- 7) When you open the Honeywell EDD format (HON_EQEDD_2019.zip) file for the first time you will be prompted to register with a screen that looks like this:

Evaluation ×

HON_EQEDD_2019
Please register - EQUIS licensing is required but missing or not accessible.
Review the EarthSoft Software Registration information and use the links

By clicking on 'Next' or 'Register' below, you accept the following liability waiver:

Until registered by purchasing a registration key, this software is an evaluation license only. As such, the entire risk as to the results of performance of the software is assumed by you. Neither EarthSoft, Inc. nor anyone else who has been involved in the creation, production, or delivery of this product shall be liable for any direct, indirect, consequential, or incidental damages (including damages or loss of business profits, business interruption, loss of business information, and the like) arising out of the use of or inability to use such product even if EarthSoft, Inc. has been advised of the possibility of such damages. Because some states do not allow the exclusion or limitation of liability for consequential or incidental damage, the above limitation may not apply to you. You must request an evaluation key from EarthSoft Inc. Please click the link below or email Help Desk at support@earthsoft.com and include ComputerId=3127139371 in the message body.

To obtain an evaluation key, visit:
<http://earthsoft.com/support/registration/>

- 8) Click Register to launch the EarthSoft EDD Format Registration Page.



Software Registration

To request software registration keys, please provide the following information.

Required fields are marked in red and with asterisks()*

To register a custom EDP format file (e.g., EPA Region 5, EPA Region 2, etc.), please visit the registration page for that format:

1. Click the Register button on the EDP Evaluation Screen
2. Select the link below the New Key Codes box to request a registration key for your workstation

Client Information

Name*:

Company*:

Address:

City*:

State:

Zip Code:

Country:

Phone Number:

Email Address*:

Quicklinks

[Register Software](#)
[Community Center](#)

- 9) Fill out the online Software Registration form with all required and non-required information:
- 10) Scroll down to the section that says "Formats(s) – Typically Require Client Approval" Select the drop down menu in the first box and select "Honeywell EQEDD Format", then select "Register Local License" in the License Type box and place a 1 in the Number of licenses box:

Formats(s) - Typically Require Client Approval		
Formats(s) - Typically Require Client Approval	License Type	Number (if applicable)
Honeywell EQEDD Format	Register Local License	1
<input type="button" value="Add Request"/>		

- 11) Click Add Request to add the requested license to the queue and it will appear in the same section as follows:

Formats(s) - Typically Require Client Approval		
Formats(s) - Typically Require Client Approval	License Type	Number (if applicable)
Honeywell EQEDD Format	Register Local License	1
<input type="button" value="Add Request"/>		

- 12) To submit your request, enter any comments about why you are requesting the format at the bottom of the web page and click on "Submit Request(s)" button:

Other
<div style="border: 1px solid black; padding: 5px;">We are a laboratory using the Honeywell EQEDD format with EQUIS Data Processor (EDP) to check our data prior to uploading to Honeywell EQUIS Enterprise site.</div>
<small>Please note that you will receive a confirmation email automatically after submitting this form. If you do not receive a confirmation email within 15 minutes of submitting your request, EarthSoft has probably not received your request. In the event that you encounter an error when attempting to submit a request, or you have not received your confirmation email, please feel free to submit again, or contact the EarthSoft Help Desk (support@earthsoft.com) for assistance. Thank you!</small>
<input type="button" value="Submit Request(s)"/> <input type="button" value="Clear"/> <input type="button" value="Help"/>

- 13) The following screen will return indicating your registration request has been received and upon Honeywell approval your registration keys will be sent to your e-mail address:



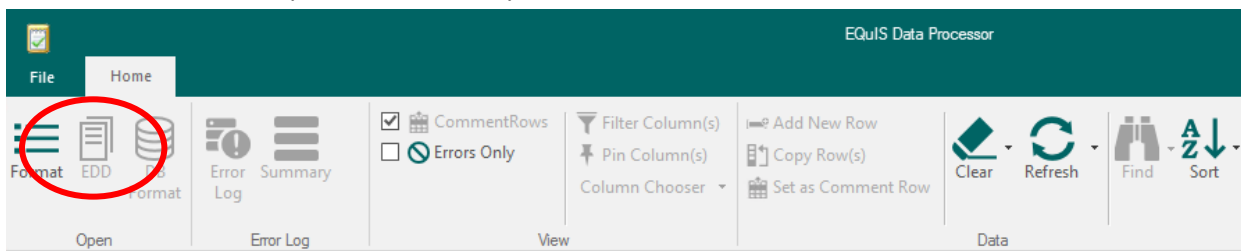
Software Registration

The following request has been received:

Honeywell EQEDD Format Register Local License

- 14) When you receive the e-mail with your registration keys, copy them and paste them into the “New Key Codes” box to the left of the “Save Key(s)” button under your Computer ID: on the Workstation License tab of the EQUIS Data Processor Register screen and click OK.

- 15) A “Registration Succeeded” notification should appear to let you know you can use the Honeywell EDD format.
- 16) Click EDD in the Open section of the EDP ribbon to open an EDD file and begin checking it for errors and compliance with Honeywell Reference Values.



- 17) Please note the contents of the HON_EQEDD_2019.zip file look contain the HON_EQEDD_2019.RVF reference values file:

Name	Type	Compressed size	Password ...	Size	Ratio	Date modified
HON_EQEDD_2019.dll	Application extension	41 KB	No	144 KB	73%	06/11/2019 4:04 PM
HON_EQEDD_2019.rvf	RVF File	270 KB	No	2,830 KB	91%	06/11/2019 4:05 PM
HON_EQEDD_2019.vbe	VBScript Encoded Script F	235 KB	No	303 KB	23%	06/13/2019 9:39 AM
HON_EQEDD_2019.xml	XML Document	6 KB	No	38 KB	85%	06/11/2019 4:04 PM
HON_EQEDD_2019.xse	XSE File	243 KB	No	407 KB	41%	06/13/2019 9:38 AM
HON_EQEDD_2019-enum.xml	XML Document	5 KB	No	28 KB	85%	06/02/2019 10:23 PM

Reference Values tend to get updated more frequently as new valid values are reviewed and approved. There is a link on the Honeywell EDD Format download page which will allow you to download the latest Reference Values File (.RVF) and insert it into you local copy of HON_EQEDD_2019.zip EDD format to update it.