



Detailed Instructions for Installing EQiS Data Processor (EDP) and the NCDEQ EDD Format Files

NCDEQ has implemented an EQiS database for our management of environmental data. The following website has the NCDEQ EQEDD format files, Instructions, and EQiS Data Processor (EDP) software application to download and use for checking EDD packages prior to sending to NCDEQ.

NCDEQ EDD Format Website: <https://earthsoft.com/ncdeq-edp-format/>

- 1) Download the appropriate version of EDP from the NCDEQ EQEDD Download Page:

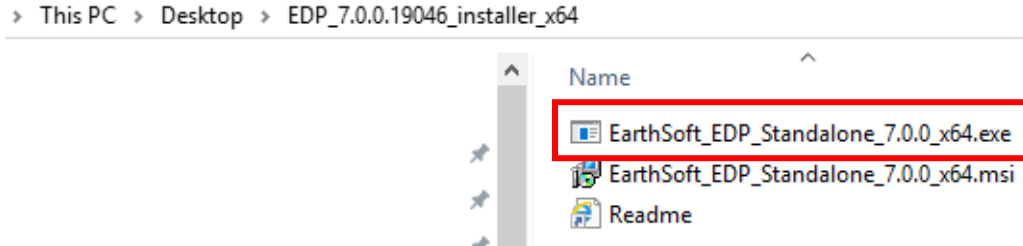
NCDEQ EDP Format



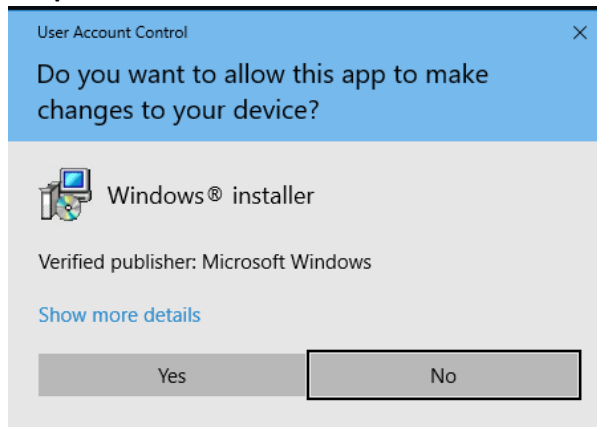
Name	Size	Type	Modified
EQiS Data Processor (EDP) v7.0.0.19046 32 bit (x86) 64 bit (x64) xcopy	50.1 – 50.3 MB	.zip	2019.02.15
NCDEQ Format	702 KB	.zip	2019.04.19
NCDEQ Reference Values	83 KB	.xlsx	2019.04.19
NCDEQ EDD Description	103 KB	.xlsx	2019.04.24
NCDEQ Blank EDD	145 KB	.xlsx	2019.04.24
Instructions for installing EQiS 7 Data Processor(EDP)			
Requires .NET Framework 4.7.2			
How to determine if you already have the .NET Framework version 4.7.2			
You can check to see if you already have the .NET Framework 4.7.2 installed by clicking Start on your Windows desktop, selecting Control Panel , and then double-clicking Add or Remove Programs . When that window appears, scroll through the list of applications. If you see Microsoft .NET Framework 4.7.2 listed, the latest version is already installed and you do not need to install it again.			
Name	Size	Type	Modified
Microsoft .NET Framework 4.7.2	N/A	External Site	

- 2) **Note:** Most users have a 64 bit install of windows 10. The file ending in x64 is commonly used.
- 3) After downloading the zip file, right click it and choose Properties to make sure it is not blocked.

- 4) Right click the file and extract the files contents.



- 5) In the folder double click on the EarthSoft_EarthSoft_EDP_Standalone_7.0.0_x64.exe to run the EDP Standalone 64-bit installer. - **Note: You may need Administrative Permissions to complete this install.**



Click "Yes" if presented with this screen.

- 6) The EarthSoft EQUIS EDP Standalone Setup Wizard will launch.



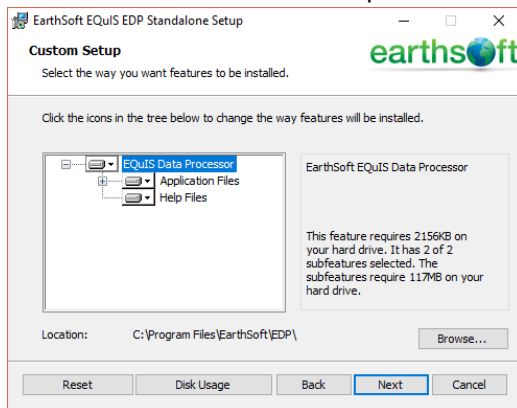
Click "Next" to begin the install

7) Accept the EarthSoft EQUIS EDP Standalone License Agreement after a careful review.

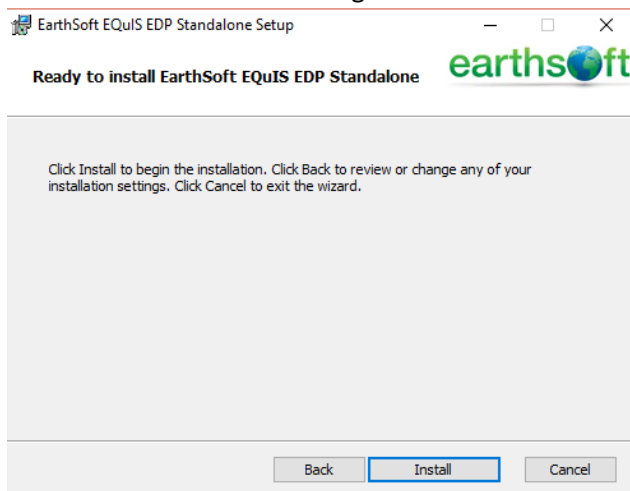


Then click "Next"

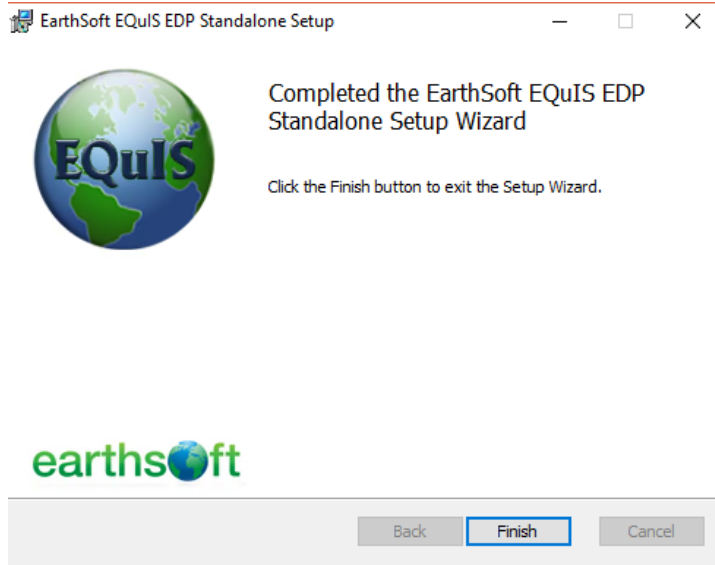
8) Click Next on the Custom Setup Screen to accept the default configuration.



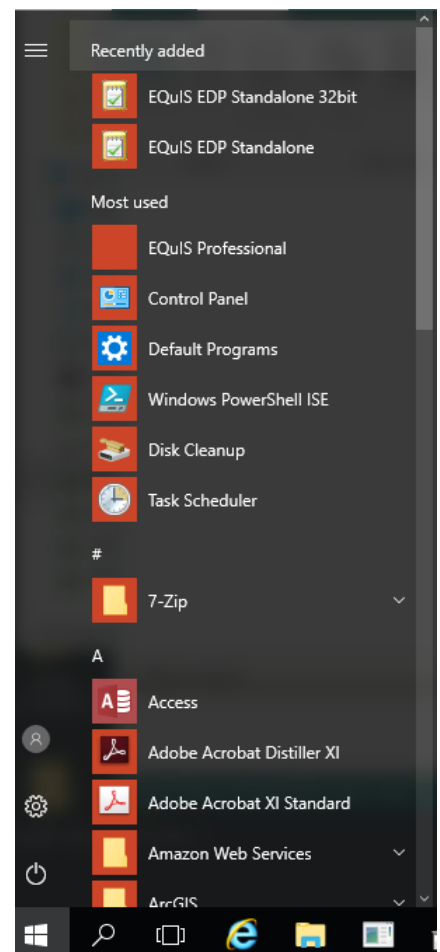
9) Click "Install" on the following screen.



10) Once the installer is complete click “Finish” on the following screen.



Note: EQuIS Data Processor Standalone will install in the C:\Program Files\EarthSoft\EDP folder and should add an EarthSoft folder in the Windows Start Menu. Launch EDP by clicking the Windows Start button and typing EDP. It is recommended to pin a short cut to the taskbar and start menu for easy access to EQuIS EDP Standalone.



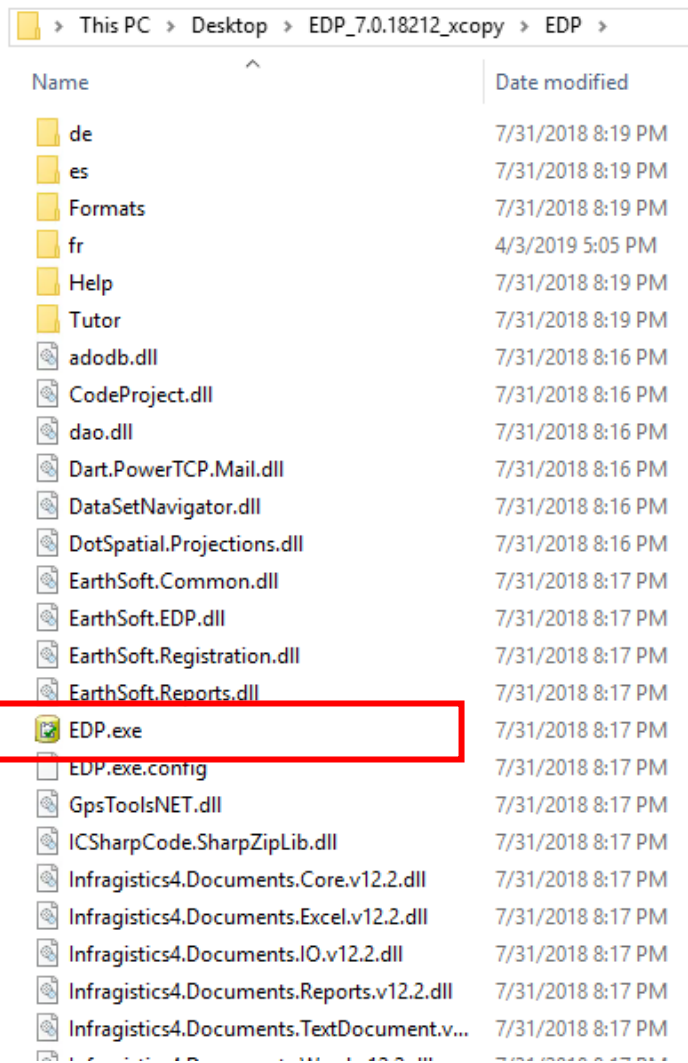
Run EQUIS Data Processor (EDP) Standalone from XCOPY Folder

Running EDP Standalone from an XCOPY folder allows users to maintain pre-installed older versions of EQUIS on their systems without needing to upgrade to EQUIS 7. The steps to use the XCOPY folder version of EDP Standalone are as follows:

- 1) Download the EDP_7.0.19046_xcopy.zip file by clicking on the “xcopy” link on the NCDEQ EQUIS EDD format download page.

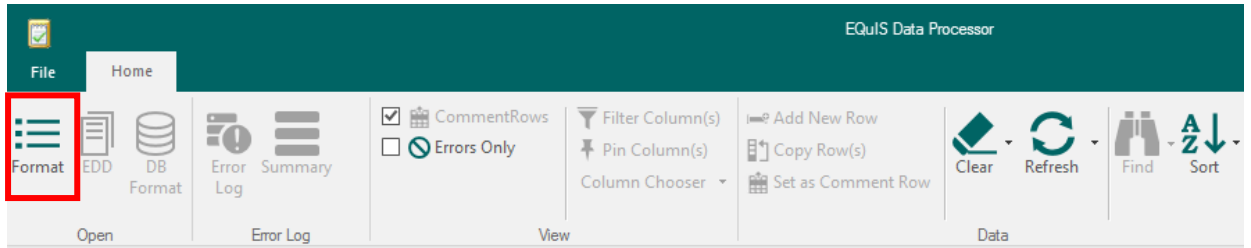
EQUIS Data Processor (EDP) v7.0.0.19046		50.1 – 50.3 MB	.zip	2019.02.15
32 bit (x86)	64 bit (x64)	xcopy		

- 2) Right click the downloaded EDP_7.0.19046_xcopy.zip file and select properties to make sure it isn't blocked.
- 3) Right click and select extract the files and contents to your My Documents or Desktop folder locations.
- 4) Browse into the EDP_7.0.19046_xcopy folder and EDP folder inside and double click on EDP.exe to launch EDP Standalone.

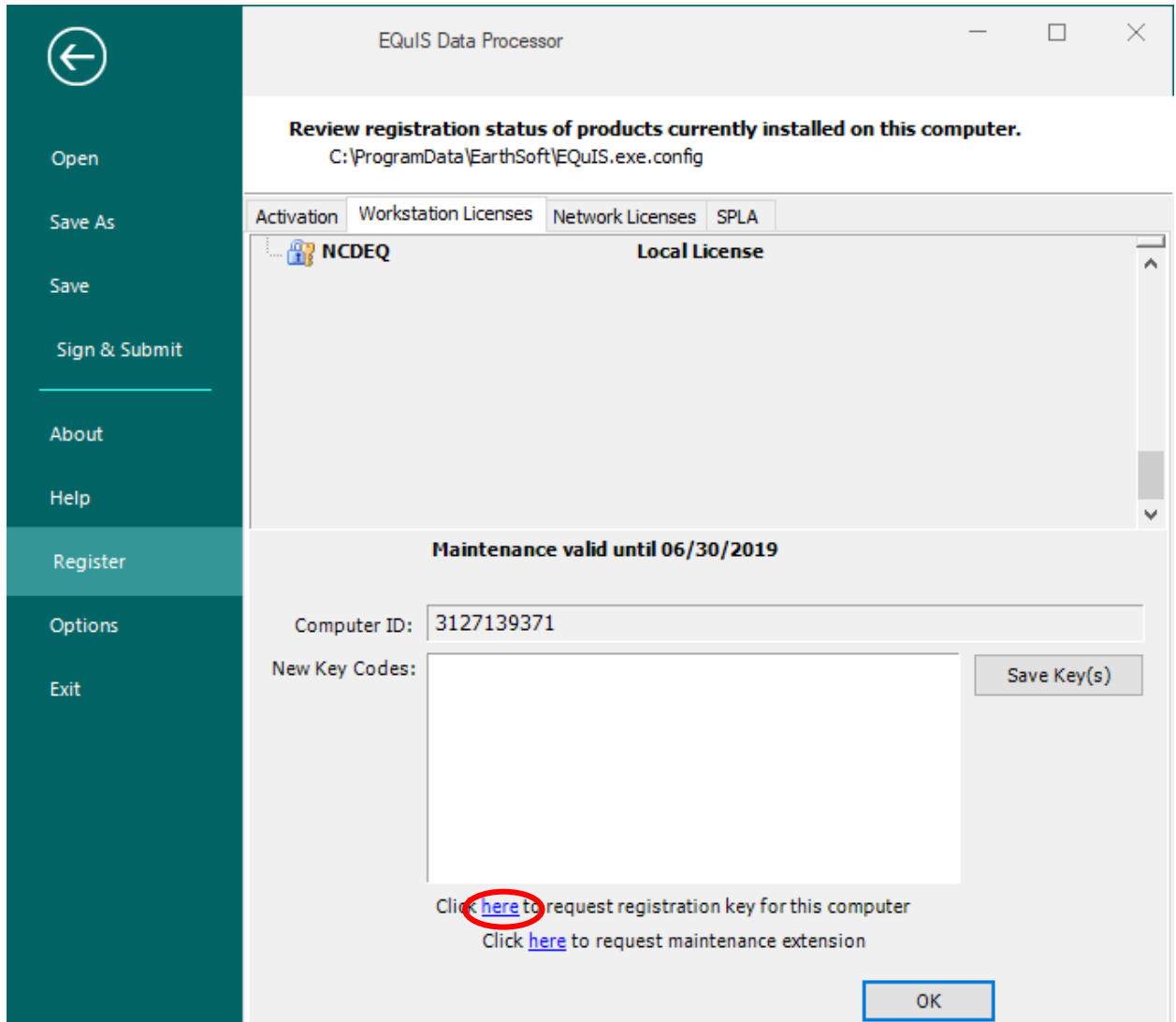


Instructions on Using the NCDEQ EQEDD Format in EDP Standalone

- Once EDP Standalone opens click “Format” to open the NCDEQ.zip EDD format



- Select the NCDEQ.zip EDD format from the location you previously downloaded it from.
- When you open the NCDEQ EDD format for the first time you will be prompted to register with a screen that looks like this:



- Click “here” circled above to request a registration key for this computer.



- 9) Fill out the online Software Registration form with all required and non-required information:



Software Registration

To request software registration keys, please provide the following information.

Required fields are marked in red and with asterisks(*).

To register a custom EDP format file (e.g., EPA Region 5, EPA Region 2, etc.), please visit the registration page for that format:

1. Click the Register button on the EDP Evaluation Screen
2. Select the link below the New Key Codes box to request a registration key for your workstation

Quicklinks

[Register Software](#)
[Community Center](#)

Client Information

Name*:

Company*:

Address:

City*:

State:

Zip Code:

Country:

Phone Number:

Email Address*:

Request Information

Computer ID*:

Comment: Please indicate if you are registering a new license, re-registering an existing license, moving a license from an old machine to a new machine, changing from a local installation to a network installation, etc.

- 10) Scroll down to the section that says "Formats(s) – Typically Require Client Approval" Select the drop down menu in the first box and select "NCDEQ Format", then select "Register Local License" in the License Type box and place a 1 in the Number of licenses box:

Formats(s) - Typically Require Client Approval		
Formats(s) - Typically Require Client Approval	License Type	Number (If applicable)
<input type="text" value="NCDEQ Format"/>	<input type="text" value="Register Local License"/>	<input type="text" value="1"/>

11) Click Add Request to add the requested license to the queue and it will appear in the same section as follows:

Formats(s) - Typically Require Client Approval		
Formats(s) - Typically Require Client Approval	License Type	Number (If applicable)
NCDEQ Format	Register Local License	1
<input type="text"/>	<input type="text"/>	<input type="text"/>

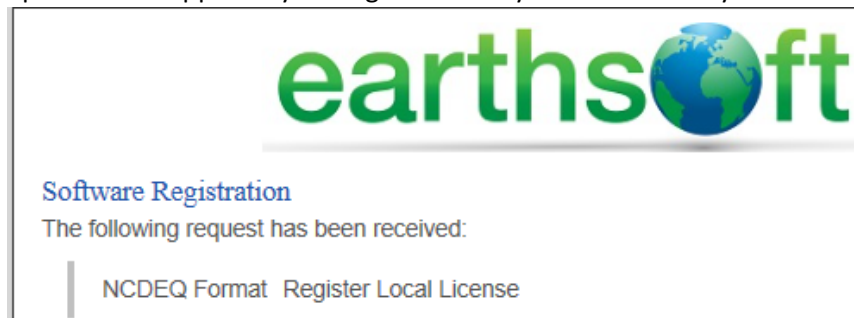
12) To submit your request, enter any comments about why you are requesting the format at the bottom of the web page and click on “Submit Request(s)” button:

Other

Using the NCDEQ EDD Format to submit data to NCDEQ.

Please note that you will receive a confirmation email automatically after submitting this form. If you do not receive a confirmation email within 15 minutes of submitting your request, EarthSoft has probably not received your request. In the event that you encounter an error when attempting to submit a request, or you have not received your confirmation email, please feel free to submit again, or contact the EarthSoft Help Desk (support@earthsoft.com) for assistance. Thank you!

13) The following screen will return indicating your registration request has been received and upon NCDEQ approval your registration keys will be sent to your e-mail address:



14) When you receive the e-mail with your registration keys, copy them and paste them into the “New Key Codes” box to the left of the “Save Key(s)” button under your Computer ID: on the Workstation License tab of the EQUS Data Processor Register screen and click OK.

Computer ID:

New Key Codes:

[Click here](#) to request registration key for this computer
[Click here](#) to request maintenance extension

A

“Registration Succeeded” notification should appear to let you know you can use the NCDEQ EDD format.